

Marking a *new era* in
Australian aged care,
the Hannah & Daryl
Cohen Family Building
is without peer.

Unrivaled amenity

1. Every home has a green aspect, with terrace gardens on each level.
2. Accommodation is integrated, meaning every household level has its own lounge, dining, kosher kitchens, and recreational spaces.
3. Each home integrates memory care into the accommodation design, empowering people living with dementia to move around with confidence.
4. Safe and secure children's playground for when the grandchildren come to visit.
5. Cultural gathering spaces include a synagogue, succah, art gallery, and kosher café, incorporating Jewish culture in a contemporary setting.
6. Community spaces include an Active Living Centre, Education Centre, rehabilitation, and therapy services to support active and healthy lifestyles.
7. Located close to retail precincts, Jewish community centres, and parks and gardens.
8. Access for doctors and allied health professionals to deliver services within the Active Living Centre to support Elder wellbeing.
9. Spacious private and shared areas for enjoying quality time with family.





The best in residential aged care, designed with Elders' independence, dignity, and wellbeing in mind.



Explore our accommodation options that meet your unique needs and preferences.

With the Hannah & Daryl Cohen Family Building, Jewish Care can reflect the unique needs and preferences of Melbourne's Jewish community.

Across seven accommodation levels there are three different room types: Traditional, Classic and Choice. Enjoy quality and contemporary comforts in the Traditional and Classic rooms or added luxury, amenities, and scenic views in the Choice rooms.

Whichever accommodation you choose, you can expect to receive the highest standard of service from us. You will experience the benefits of our Hand-in-Hand model and the personalised approach to your care and support.

In addition, social and recreational activities, rehabilitation services, pastoral support, allied health services, and communal gardens are equally available to all.

Welcome Home

Located at the gateway of Melbourne's most beautiful and grand city boulevard, the newly built, leading-edge Hannah & Daryl Cohen Family Building represents Jewish Care's vision, extensive research, and insights from the Melbourne Jewish community.

It exemplifies Jewish Care's philosophy of enriching lives, and we invite you and your family to experience and enjoy all it has to offer.

With scenic views of Melbourne to be admired from all angles of the compass, this luxury accommodation will be a highly coveted address.

This modern home is stage one of the Holckner Family Senior Living & Community Precinct. Accommodating 156 Elders over seven levels with an additional two levels dedicated to a range of much-needed community services, it is truly a statement of excellence.

Community services include:

- Active Living Centre
- Education Centre
- Rehabilitation and therapy services
- Financial services
- Social work and case management services
- Sessional GPs and specialists
- Dental services

Jewish heritage and culture sits naturally in this contemporary setting, with the presence of a dedicated synagogue, succah, private dining room, and kosher café creating a *heimish* environment for our Elders and their families to celebrate festivals and *simchas*.



Hand-in-Hand™

The Hannah & Daryl Cohen Family Building will truly feel like home from the minute you step inside.

Unique to Jewish Care and integrated into our new accommodation and services, the Hand-in-Hand model supports your independence, dignity, and wellbeing.

Hand-in-Hand acknowledges the diverse preferences of our community, supporting healthy ageing and catering to individual needs as they change over time.

By creating a household environment on each level, small 'family' groups form naturally to make it feel just like home. Dedicated and trained staff are always nearby to provide personal care and daily support, and to encourage involvement in social and leisure activities. The consistency of staff presence builds strong, trusted relationships and ensures familiarity in your home.

With Hand-in-Hand, you can continue to do the things you want, and are able to do, with the confidence that support is always nearby, if it's needed. Each household level has its own lounge, dining room, kosher kitchen, and recreational spaces, promoting inclusion and engagement.

We know food is so important to human connection and Jewish culture. That's why we have made accessible kitchens a central design feature of the Hand-in-Hand model; so you can continue the enjoyment of regular meal preparation. You can prepare fresh food in your home kitchen, alongside staff. Food is available when you want it, or when you want to prepare it, just like it should be.

With Hand-in-Hand, you can experience greater independence over your daily life and routines, and continue to express your individuality.

Your culture, your way

Cultural expression is intrinsically linked to health and wellbeing. It forms part of your identity; the values and beliefs that are uniquely you. It is also how you connect with people and places, particularly as you grow older and look back on a lifetime of cultural celebration with family and friends.

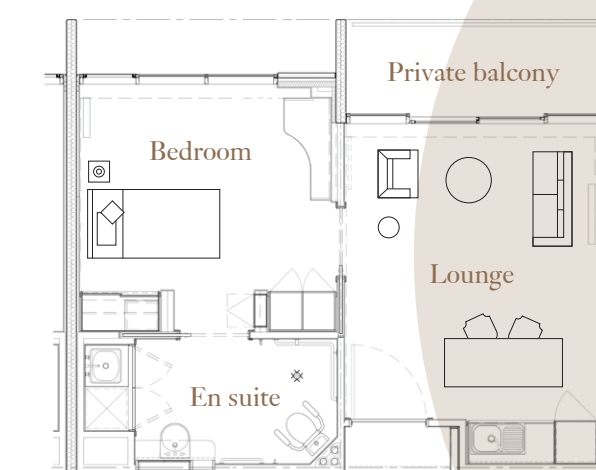
We have designed dignified homes, sensitive to the diverse backgrounds of our Jewish community members.

These are homes of the highest quality with impeccable attention to detail and a carefully designed selection of spaces to suit your daily preferences.

You, and those important in your life, and community members, can all share in a rich program of cultural and educational experiences hosted in the gallery, synagogue, activity centre, and outdoor spaces.

You are also encouraged to contribute to the design and programming of the yearly calendar of cultural activities.

From quiet reflection to joyful celebration, the choice is yours. Enjoy culture, your way, with Jewish Care.



For accommodation without rival, experience Choice.

On the upper levels five to eight, Choice suites feature:

- Spacious bedroom and en suite adjoining a light-filled lounge, with well-appointed kitchenette including fridge, microwave, dishwasher, kettle, crockery, and cutlery;
- Private balcony with outdoor furniture and sweeping views of Port Phillip Bay, Eastern suburbs, parklands, or the city skyline;
- Exemplary lounge/dining with two seater sofa, armchair, smart TV, and dining table and chairs;
- Well-appointed en suite with combined washer/dryer and laundry sink;
- Bedroom with king single bed, smart TV, and built-in robes; and
- Artwork by renowned artist Victor Majzner.



Artist impression

Contact us for a guided tour and a meeting to discuss your interest in the Hannah & Daryl Cohen Family Building.

T: (03) 8517 5999

E: elderhomes@jewishcare.org.au

W: jewishcare.org.au/cohenbuilding

Jewish Care Victoria
619 St Kilda Road
Melbourne Victoria 3004

 **JewishCare**
Enriching Lives

Hand-in-Hand is a trademark of Jewish Care Victoria